



MSSA Race Meeting

February 2023

Barry Lenoble

Vice Commodore



Agenda

- Start Night
- Cruising Class
- Race Committee Sign up
- Race Marks



Start Night

- July 10 at 7:00PM
- Three starts to be done
- Standard starting sequence will be used
 - Standard 5 minute sequence with horns and flags
 - 5 minute break after the start
- SHORT race after the last start.
- Some tips
 - Which side of the line is favored?
 - How many boats in the fleet?
 - Starboard Tack or Port Tack?



Cruising Class?

- A Racing class for Cruising Boats.
- Goal is to get MORE boats racing
- NOT to move class C or D into cruising
- If you don't race because of the hassle of lightening the boat this could be a good option:
 - Should have at least 2 anchors
 - Should have a dodger and or bimini
 - Should have water and fuel tanks at least ½ full
 - Dacron sails with roller furler
 - Please obey the spirit of the class
- We need at least three boats to have the Cruising Class
- Racing would be on Mondays with the double handed boats.



Committee Boat Sign up

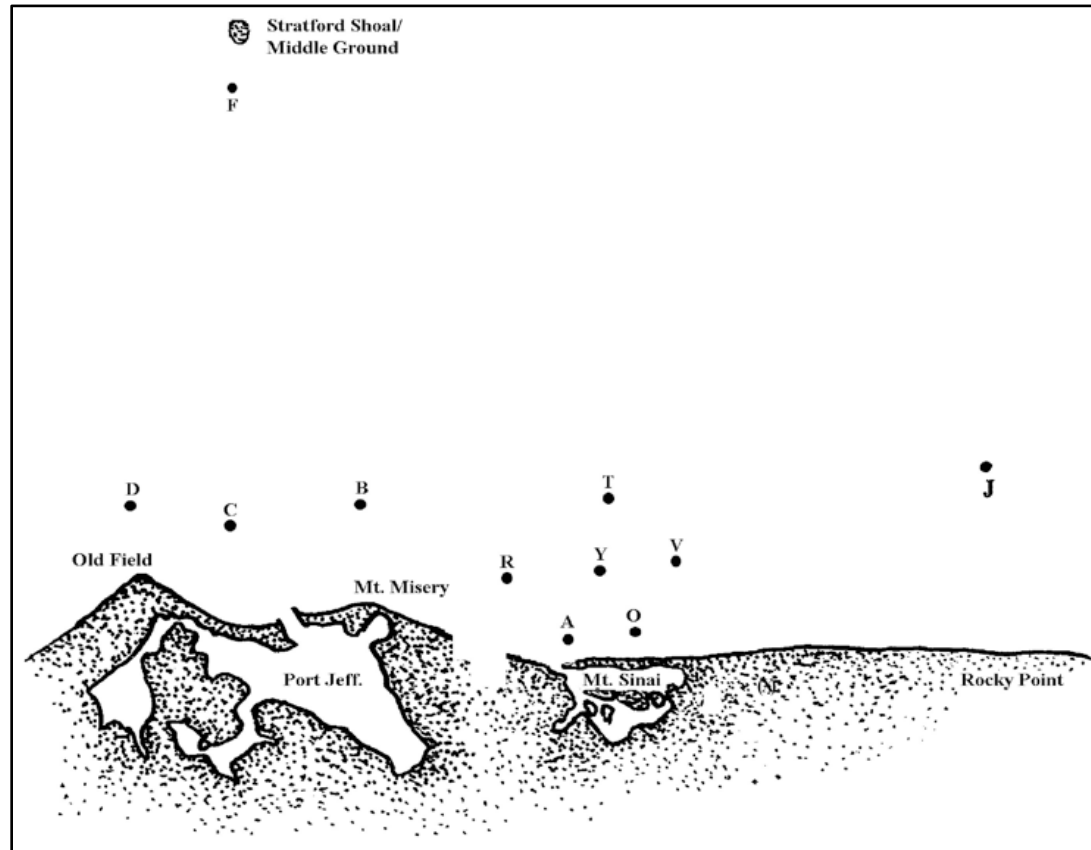
- Signup Genuis
- Link on [MSSA.ORG](https://www.mssa.org)



MSSA Race Marks

Changes for 2023

MSSA Racing Program and Marks Background



- In the early years of the club, the MSSA used government marks such as the Mt. Sinai R/W, Can 11, and others when racing. To simplify signaling the course, these marks were given letter designations “A”, “B”, “C”, “D”, etc
- As the racing program grew, Marks “R”, “O”, “Y”, “V”, and “T” are deployed by the MSSA to enhance our Course options.
- When the USCG removed the Mt Sinai R/W, we installed Club Mark “A” and moved the course Eastward to retain the course geometry.

PJYC Marks

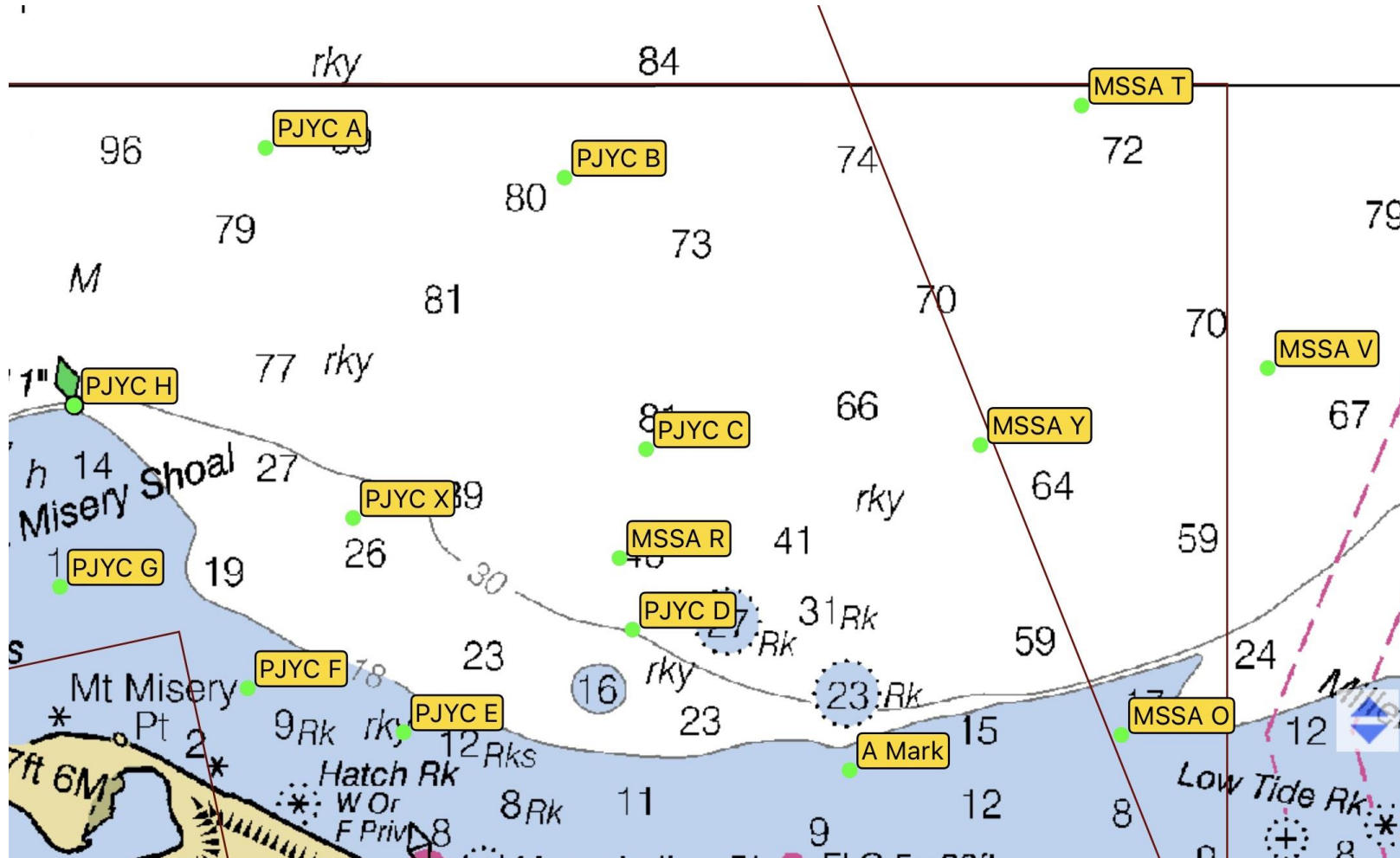
- In the past several years, there have been discussions about possibly merging the PJYC and MSSA Courses.
 - These discussions focused on mutual benefits and potential cost savings.
- For 2023, the PJYC decided to move their course slightly Eastward.
 - The PJYC sought to increase leg lengths for certain courses.
 - The anticipated move revived the discussions about 'marks sharing' and/or merging.
 - When presented to the MSSA membership, there has been a lot of comment, both for and against merging our race marks.

PJYC Marks

- Merging marks and/or eliminating marks deployed by either club could result in cost savings, but the impact on our racing program is much harder to measure.
- Without actual experience, it is not possible to quantify any improvement or degradation to our racing program.
- Retaining the MSSA Marks while having the PJYC Marks available would be prudent.

MSSA and PJYC Weeknight Marks

(PJYC Marks shown in their proposed 2023 positions)



MSSA and PJYC Weeknight Marks

- There are a few marks used by PJYC which have the same names as MSSA marks:
 - “A”, “B”, “C”, “D”, “F”, are obvious duplicate names
 - “X”, and “G” have special definitions in the MSSA Sailing Instructions
- To avoid confusion that might occur with duplicate mark names, we will revise the names of marks, eliminating any duplication.
- With unique names, the likelihood of the RC or Competitors misinterpreting the course is reduced.

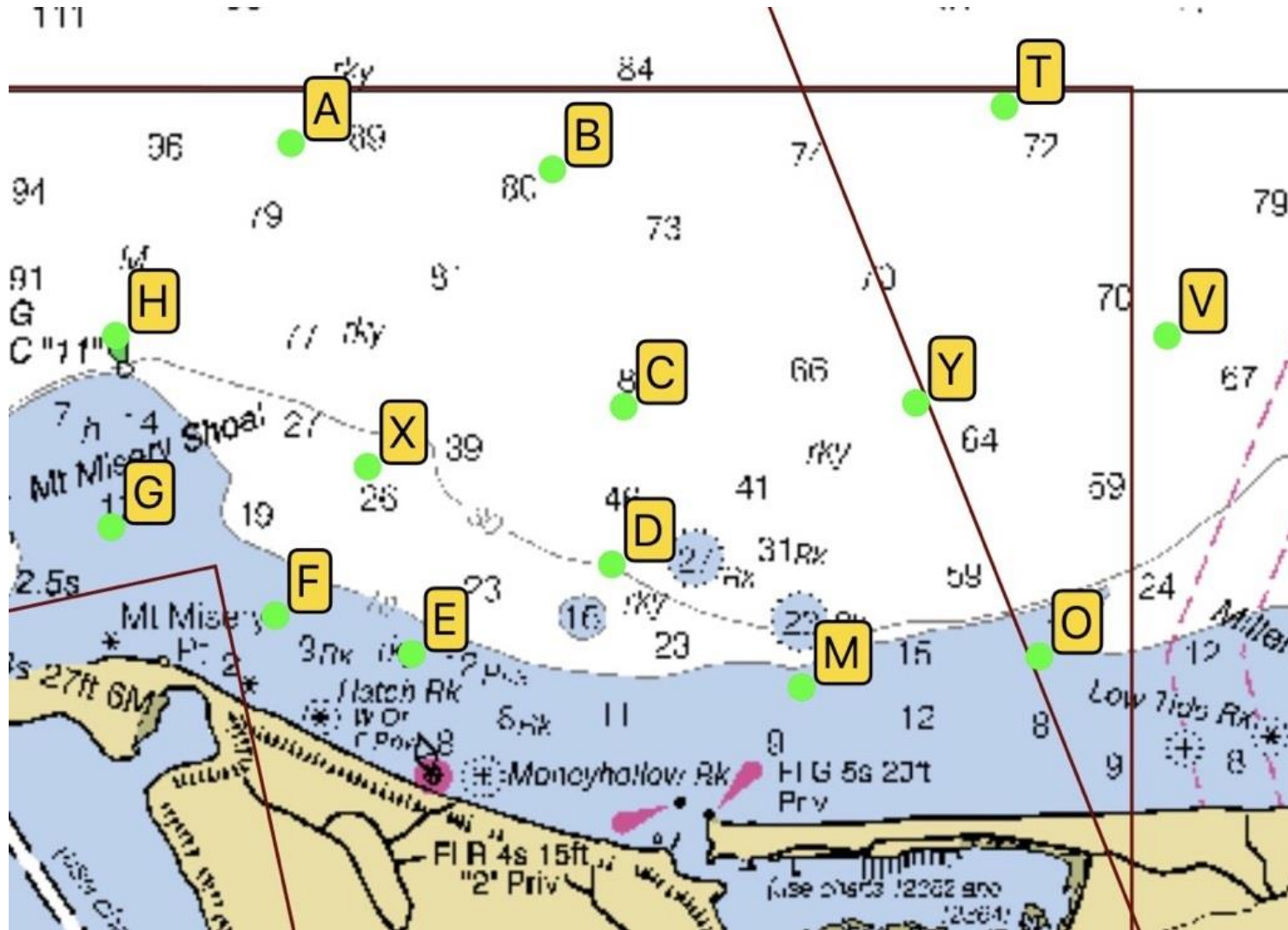
MSSA and PJYC Weeknight Marks

- Where the two sailing areas overlap, MSSA “R” is situated nearby PJYC “D” and “C”.
- By removing “R” some weeknight courses can be set using PJYC “C “ and “D” and potentially improving course geometry.
- This will avoid competitors mis-identifying marks during the race.

MSSA and PJYC Marks

- The MSSA “A” Mark will be renamed to “M”
- Suggested Weeknight courses will remain the same with substitution of “M” for “A” and “C” or “D” for “R”.
- Jackrabbit Courses will have new mark designations, but the distances are not impacted.
- Barrister Cup and Middle Ground Night Race tables will be updated, but the course geometries will remain the same.
- RC Boat can not start west of mark C or D

MSSA and PJYC Marks



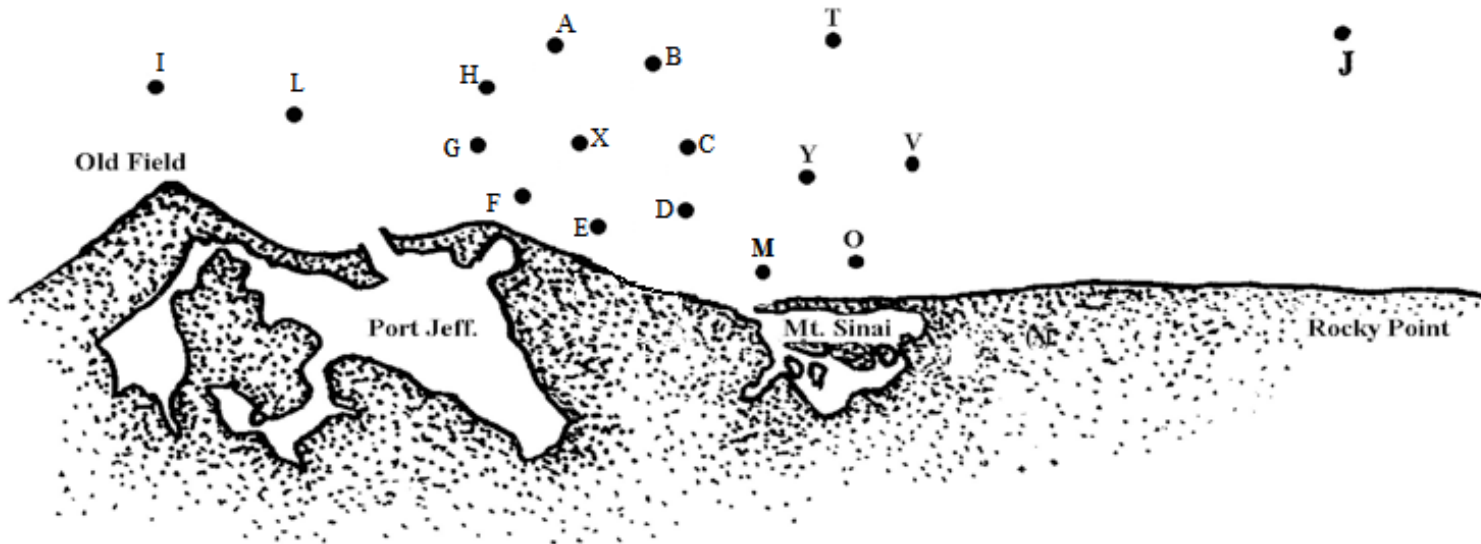
Marks Definitions

Mark	Description
"M"	MSSA Club Mark- Approx 0.3 nautical miles to east of Mt. Sinai Harbor entrance
"H"	C"11" off Mt. Misery Point
"L"	RW Mo (A) Bell, Port Jefferson
"I"	"11A" Gong off Old field Point
"K"	R"2" F1 4 sec. Gong, Middle Ground
"S"	Is "M" as a finishing mark when the Committee boat is NOT on station, and specifically indicated in the course selection. "S" (A) is to be passed within two boat lengths keeping the mark to the north. Your boat is considered finished when any part of your hull or rig crosses an imaginary line 180 degree from the mark. To be scored as finishing she shall note her finishing time and should note her relative finishing position to any nearby boats and report them to the club scorer, email preferred, as soon as reasonably possible in addition to announcing on VHF CH-72.
"J"	C"9" - off Rocky Point
"O"	MSSA Club Mark - Approx 0.7 nautical miles on a heading of 96 degrees from "A"
"R"	MSSA Club Mark - Approx 0.85 nautical miles on a heading of 330 degrees from "A"
"T"	MSSA Club Mark - approx. 1.75 nautical miles on a heading of 30 degrees from "A"
"V"	MSSA Club Mark - Approx. 1.5 nautical miles on a heading of 60 degrees from "A"
"W"	MSSA Club Mark - Temporary (portable) mark to be placed 1 nautical mile directly windward of the starting line.
"Y"	MSSA Club Mark - located half-way between "A" and "T" approximately 0.85 nautical miles from A on a heading of 30 degrees from A.
"Z"	MSSA Club Mark - Z will be a temporary portable mark placed principally for the start to be directly to leeward of the first mark so that the first mark is dead into the wind. Distance to the first mark will be 3/4 of a mile unless otherwise specified
"A"	PJYC Club Mark, NW of Mt Sinai. See back page for coordinates
"B"	PJYC Club Mark, NW of Mt Sinai. See back page for coordinates
"C"	PJYC Club Mark, W of Mt Sinai. See back page for coordinates
"D"	PJYC Club Mark, W of Mt Sinai. See back page for coordinates
"E"	PJYC Club Mark, W of Mt Sinai. See back page for coordinates
"F"	PJYC Club Mark, W of Mt Sinai. See back page for coordinates
"G"	PJYC Club Mark, W of Mt Sinai. See back page for coordinates

Racing Area Overview

Stratford Shoal/
Middle Ground

•
K



Marks Locations

Mark	Common Name	Chart Ref.	Depth	Coordinates	Formerly Known as:
"M", "S"	MSSA Club Mark		15'	N 40 58.294 / W 073 02.217	"A", "G"
"O"	MSSA Club Mark		13'	N 40 58.382 / W 073 01.322	
"T"	MSSA Club Mark		73'	N 40 59.952 / W 073 01.453	
"V"	MSSA Club Mark		70'	N 40 59.297 / W 073 00.840	
"Y"	MSSA Club Mark		69'	N 40 59.105 / W 073 01.786	
"J"	Miller Place/Rocky Point	GC "g"		N 40 59.587 / W 072 57.887	
"X"	PJYC Club Mark (Center)		26'	N 40 58.923 / W 73 03.853	
"A"	PJYC Club Mark (N)		97'	N 40 59.846 / W 73 04.141	
"B"	PJYC Club Mark (NE)		80'	N 40 59.772 / W 73 03.156	
"C"	PJYC Club Mark (E)		81'	N 40 59.095 / W 73 02.887	
"D"	PJYC Club Mark (SE)		30'	N 40 58.644 / W 73 02.932	
"E"	PJYC Club Mark (S)		12'	N 40 58.389 / W 73 03.686	
"F"	PJYC Club Mark (SW)		12'	N 40 58.499 / W 73 04.200	
"G"	PJYC Club Mark (W)		15'	N 40 58.752 / W 73 04.818	
"K"	Middle Ground	R "2" BELL		N 41 03.093 / W 073 06.206	"F"
"I"	Old Field	G "11A"		N 40 59.249 / W 073 07.281	"D"
"L"	Pt. Jeff Harbor Entrance	RW "PJ"		N 40 59.332 / W 073 06.398	"C"
"H"	Mt. Misery Shoal	GC "11"		N 40 59.204 / W 073 04.772	"B"